



Amenbury Court

Harpenden, AL5 2BU

Extremely spacious, three bedroom, top floor apartment (lift access) within prime central Harpenden location, The Avenues. Beautifully presented throughout and benefitting from private residents parking and garage. Walking distance to all local amenities, the station and Rothamsted Park.

Guide price £735,000

Amenbury Court

Harpenden, AL5 2BU



- Prime Avenues location
- Top Floor (lift access)
- Beautifully presented throughout
- Garage & allocated parking
- Share of Freehold
- Annual Service charge £4,200
- Council Tax F

Entrance Hall

Living/Dining Room

24'0" x 20'7" (7.34m x 6.29m)

Kitchen

9'8" x 7'6" (2.97m x 2.30m)

Inner Hall

Bedroom One

13'10" x 12'7" (4.22m x 3.86m)

Bedroom Two

11'3" x 10'5" (3.43m x 3.20m)

Bedroom Three

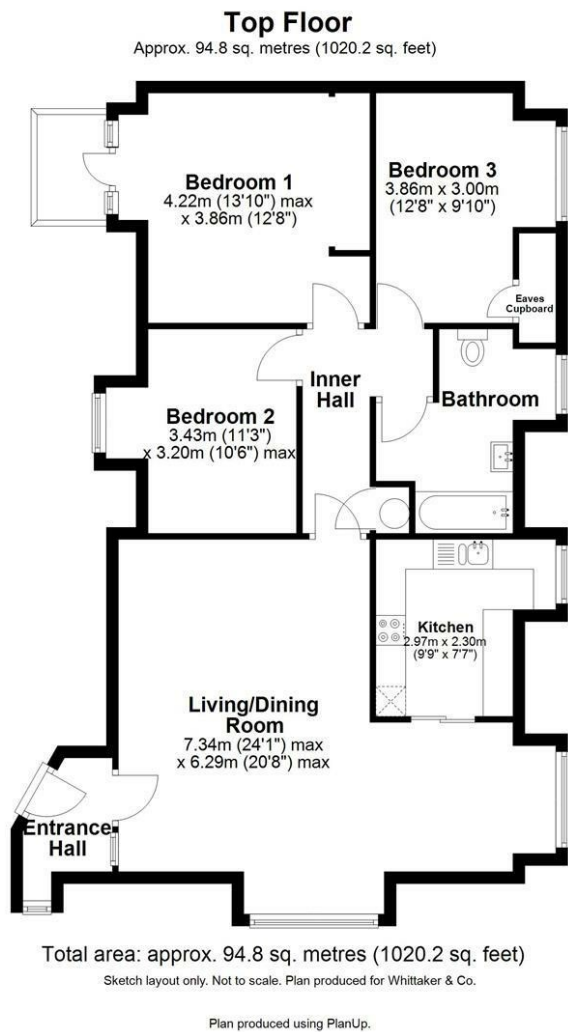
12'7" x 9'10" (3.86m x 3m)

Bathroom





Floor Plan



These particulars, whilst believed to be accurate are set out as a general outline only for guidance and do not constitute any part of an offer or contract. Intending purchasers should not rely on them as statements of representation of fact, but must satisfy themselves by inspection or otherwise as to their accuracy. No person in this firms employment has the authority to make or give any representation or warranty in respect of the property.

